

Country Data Report for YEMEN, 1996-2007

This Data Report provides a summary of the six aggregate governance indicators, together with all of the publicly-available disaggregated data on which the aggregate indicators are based. The underlying data as well as methodological issues are described more fully in "Governance Matters VII: Governance Indicators for 1996-2007" (June 2008).

The Report displays the country's performance for all available years between 1996 and 2007 in six governance dimensions: i) Voice & Accountability, ii) Political Stability and Lack of Violence/Terrorism, iii) Government Effectiveness, iv) Regulatory Quality, v) Rule of Law, and vi) Control of Corruption. Each page shows the country's percentile rank on one of the six governance indicators. Percentile ranks indicate the percentage of countries worldwide that rate below the selected country. Higher values thus indicate better governance ratings. The graph also reports the margins of error displayed in the line charts by dashed lines, and corresponding to a 90% confidence interval. This means that there is a 90 percent probability that governance is within the indicated range.

Underneath the line charts, the Report also displays data from all the underlying sources used for that indicator. Individual ratings have been rescaled to run from 0 (low) to 1 (high). These scores are comparable over time and across countries since most individual measures are based on similar methodologies over time. Scores from different individual indicators are not however directly comparable with each other since the different data sources use different units and cover different sets of countries. The data from the individual indicators are in fact further rescaled to make them comparable across data sources before constructing the aggregate governance indicators. To find out more about each source/organization click on the provided links. More information about each of the underlying organization/source can also be found in Appendices A and B of the **Governance Matters VII** paper.

Relevant links:

www.govindicators.org

www.worldbank.org/wbi/governance/

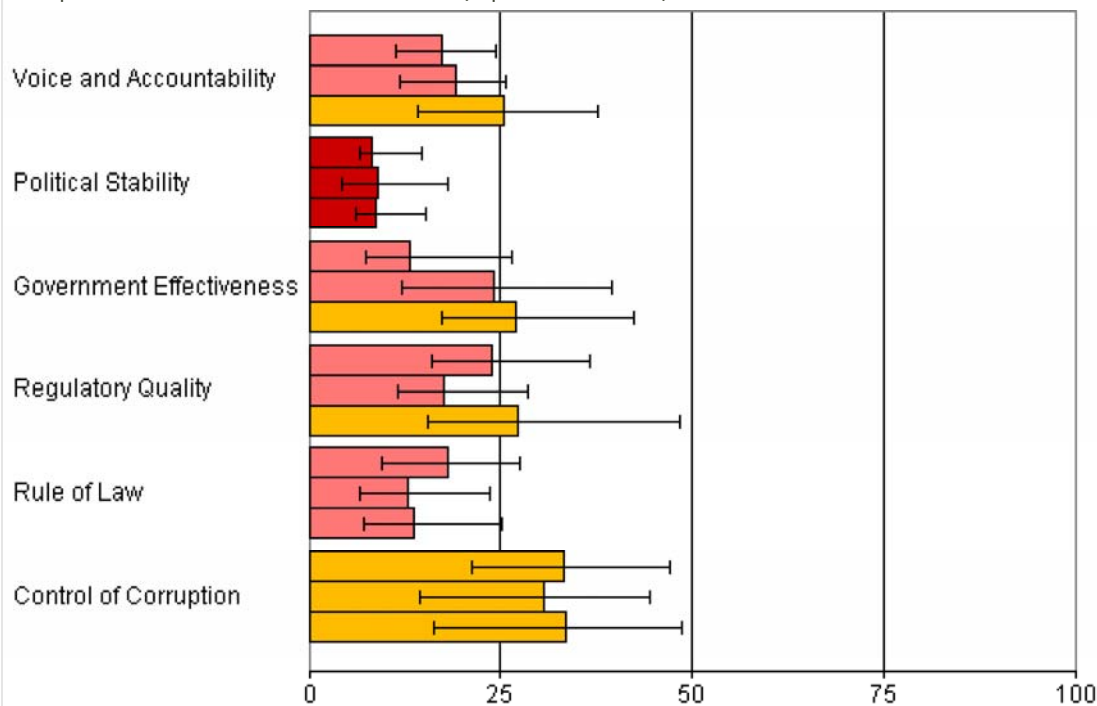
Disclaimer

The data and research reported here do not reflect the official views of the World Bank, its Executive Directors, or the countries they represent. The WGI are not used by the World Bank Group to allocate resources or for any other official purpose.



YEMEN

Comparison between 2007, 2003, 1998 (top-bottom order)



Country's Percentile Rank (0-100)

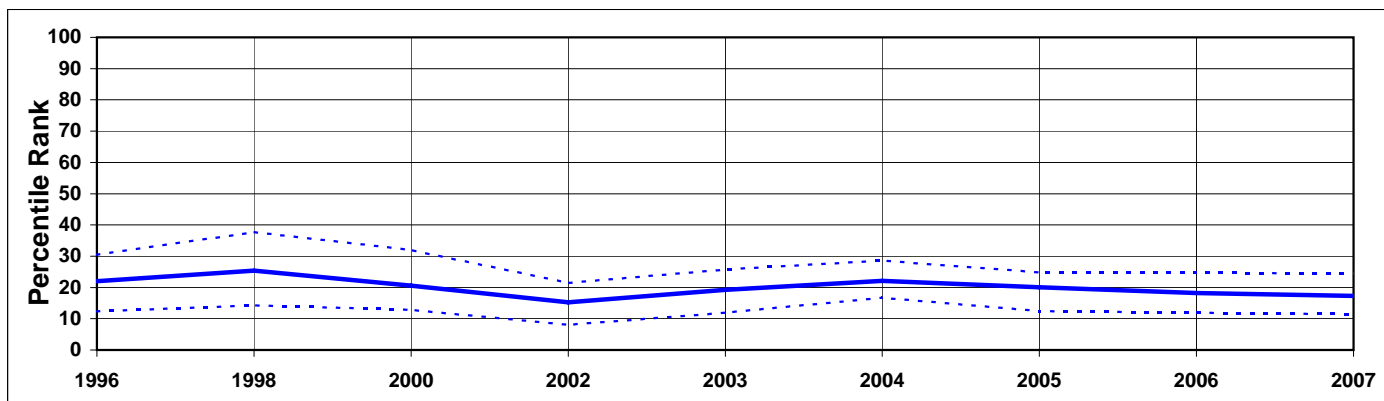


Source: Kaufmann D., A. Kraay, and M. Mastruzzi 2008: Governance Matters VII: Governance Indicators for 1996-2007

Note: The governance indicators presented here aggregate the views on the quality of governance provided by a large number of enterprise, citizen and expert survey respondents in industrial and developing countries. These data are gathered from a number of survey institutes, think tanks, non-governmental organizations, and international organizations. The aggregate indicators do not reflect the official views of the World Bank, its Executive Directors, or the countries they represent. The WGI are not used by the World Bank Group to allocate resources or for any other official purpose.

YEMEN, 1996-2007

Aggregate Indicator: Voice & Accountability

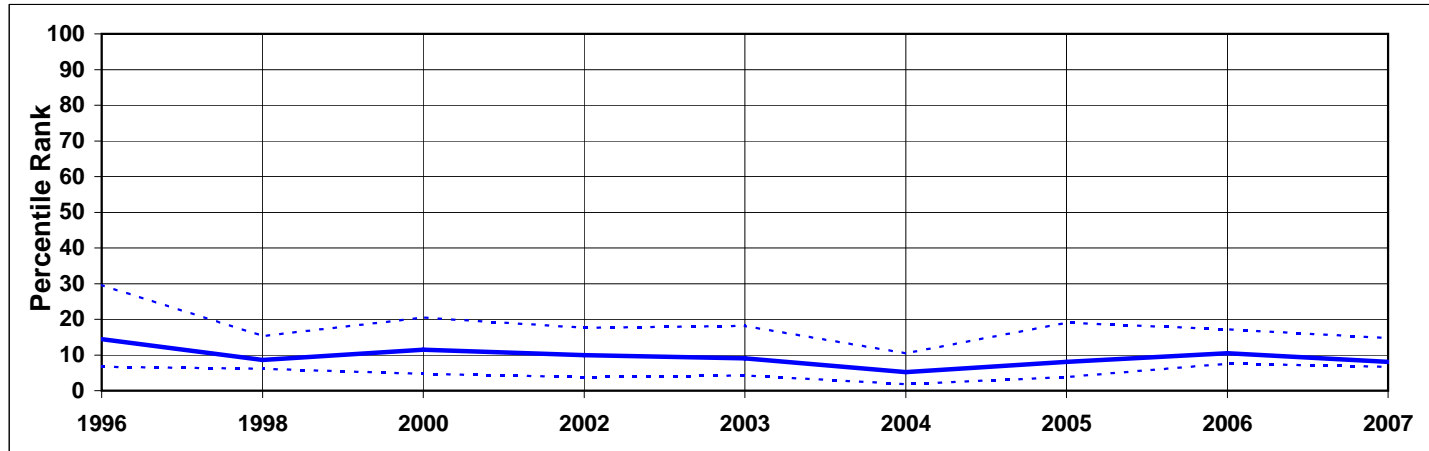


Individual Indicators used to construct Voice & Accountability

Code	Source	Website	1996	1998	2000	2002	2003	2004	2005	2006	2007
AEO	OECD Development Center African Economic Outlook	http://www.oecd.org/dev/aeo
AFR	Afrobarometer	http://www.afrobarometer.org
BTI	Bertelsmann Transformation Index	http://www.bertelsmann-transformation-index.de/	0.00	0.00	0.36	0.36	0.36	0.33
CCR	Freedom House Countries at the Crossroads	http://www.freedomhouse.org	0.49	0.49	0.49	0.49	0.49
EIU	Economist Intelligence Unit	http://www.eiu.com	0.19	0.13	0.13	0.13	0.13	0.13	0.13	0.25	0.25
FRH	Freedom House	http://www.freedomhouse.org	0.29	0.29	0.28	0.28	0.33	0.29	0.26	0.27	0.28
GCS	World Economic Forum Global Competitiveness Survey	http://www.weforum.org
GII	Global Integrity Index	http://www.globalintegrity.org/	0.31	0.31
GWP	Gallup World Poll	http://www.gallupworldpoll.com	0.35	0.35
HUM	Cingranelli-Richards (CIRI) Human Rights Database	http://www.humanrightsdata.com	0.25	0.25	0.00	0.13	0.00	0.13	0.13	0.13	0.13
IFD	IFAD Rural Sector Performance Assessments	http://www.ifad.org	0.56	0.62	0.64	0.66
IPD	Institutional Profiles Database	http://www.cepii.fr/	0.48	0.48
LBO	Latinobarometro	http://www.latinobarometro.org
MSI	IREX Media Sustainability Index	http://www.irex.org	0.32	0.32	0.32
OBI	International Budget Project Open Budget Index	http://www.internationalbudget.org/
PRS	Political Risk Services International Country Risk Guide	http://www.prsgroup.com	0.67	0.67	0.58	0.58	0.67	0.67	0.67	0.67	0.67
RSF	Reporters Without Borders Press Freedom Index	http://www.rsf.org	0.65	0.58	0.55	0.58	0.50	0.50
VAB	Vanderbilt University Americas Barometer Survey	http://www.lapopsurveys.org
WCY	Institute for management & development World Competitiveness Yearbook	http://www.imd.ch
WMO	Global Insight Business Conditions and Risk Indicators	http://www.globalinsight.com	..	0.44	0.44	0.44	0.44	0.41	0.44	0.50	0.50

YEMEN, 1996-2007

Aggregate Indicator: Political Stability and Absence of Violence

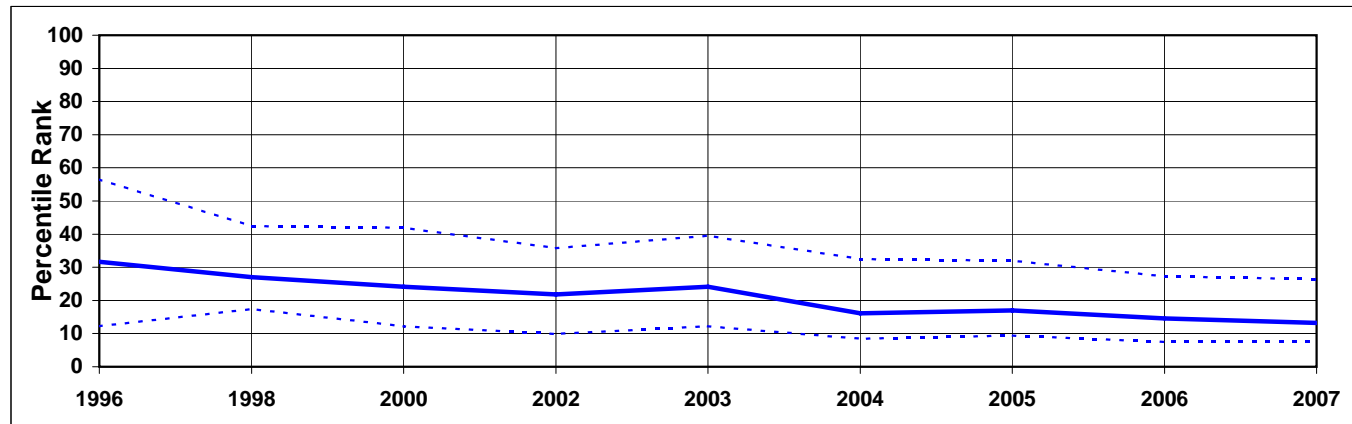


Individual Indicators used to construct Political Stability and Absence of Violence

Code	Source	Website	1996	1998	2000	2002	2003	2004	2005	2006	2007
AEO	OECD Development Center African Economic Outlook	http://www.oecd.org/dev/aeo
BRI	Business Environment Risk Intelligence Business Risk Service	http://www.beri.com
DRI	Global Insight Global Risk Service	http://www.globalinsight.com	0.63	0.65
EIU	Economist Intelligence Unit	http://www.eiu.com	0.20	0.25	0.25	0.25	0.30	0.15	0.15	0.20	0.20
GCS	World Economic Forum Global Competitiveness Survey	http://www.weforum.org
HUM	Cingranelli-Richards Human Rights Database & Political Terror Scale	http://www.humanrightsdata.com	0.40	0.42	0.42	0.58	0.42	0.29	0.46	0.50	0.50
IJT	iJET Country Security Risk Ratings	https://worldcue.ijet.com/tic/login.jsp	0.00	0.25	0.25	0.25
IPD	Institutional Profiles Database	http://www.cepii.fr/	0.53	0.53
MIG	Merchant International Group Gray Area Dynamics	http://www.merchantinternational.com	0.10	0.10	0.10	0.25	0.20	0.23
PRS	Political Risk Services International Country Risk Guide	http://www.prsgroup.com	0.69	0.56	0.74	0.70	0.73	0.72	0.73	0.75	0.72
WCY	Institute for management & development World Competitiveness Yearbook	http://www.imd.ch
WMO	Global Insight Business Conditions and Risk Indicators	http://www.globalinsight.com	..	0.25	0.25	0.19	0.25	0.42	0.25	0.38	0.25

YEMEN, 1996-2007

Aggregate Indicator: Government Effectiveness

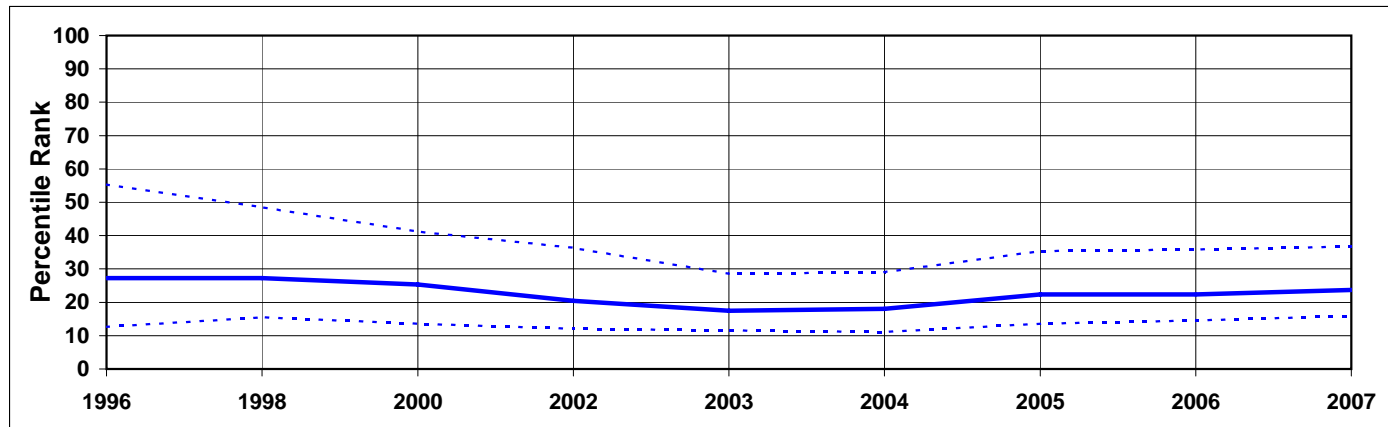


Individual Indicators used to construct Government Effectiveness

Code	Source	Website	1996	1998	2000	2002	2003	2004	2005	2006	2007
ADB	African Development Bank Country Policy and Institutional Assessments	http://www.afdb.org/
AFR	Afrobarometer	http://www.afrobarometer.org
ASD	Asian Development Bank Country Policy and Institutional Assessments	http://www.adb.org/
BPS	Business Enterprise Environment Survey	http://www.worldbank.org/eca/governance
BRI	Business Environment Risk Intelligence Business Risk Service	http://www.beri.com
BTI	Bertelsmann Transformation Index	http://www.bertelsmann-transformation-index.de/	0.19	0.19	0.34	0.34	0.34	0.37
DRI	Global Insight Global Risk Service	http://www.globalinsight.com	0.41	0.45
EGV	Brown University's Center for Public Policy	http://www.insidepolitics.org/egovt06int.pdf	0.50	0.29	0.25	0.23	0.23	0.23
EIU	Economist Intelligence Unit	http://www.eiu.com	0.25	0.13	0.13	0.13	0.13	0.13	0.13	0.25	0.25
GCS	World Economic Forum Global Competitiveness Survey	http://www.weforum.org
GWP	Gallup World Poll	http://www.gallupworldpoll.com	0.49	0.49
IFD	IFAD Rural Sector Performance Assessments	http://www.ifad.org	0.50	0.53	0.53	0.63
IPD	Institutional Profiles Database	http://www.cepii.fr/	0.12	0.12
LBO	Latinobarometro	http://www.latinobarometro.org
MIG	Merchant International Group Gray Area Dynamics	http://www.merchantinternational.com	0.15	0.10	0.15	0.15	0.15	0.15
PIA	World Bank Country Policy and Institutional Assessments	http://www.worldbank.org	NA	NA	NA	NA	NA	NA	0.48	0.48	0.45
PRS	Political Risk Services International Country Risk Guide	http://www.prsgroup.com	0.50	0.50	0.25	0.25	0.25	0.25	0.25	0.25	0.25
WCY	Institute for management & development World Competitiveness Yearbook	http://www.imd.ch
WMO	Global Insight Business Conditions and Risk Indicators	http://www.globalinsight.com	..	0.38	0.38	0.38	0.38	0.32	0.38	0.38	0.38

YEMEN, 1996-2007

Aggregate Indicator: Regulatory Quality

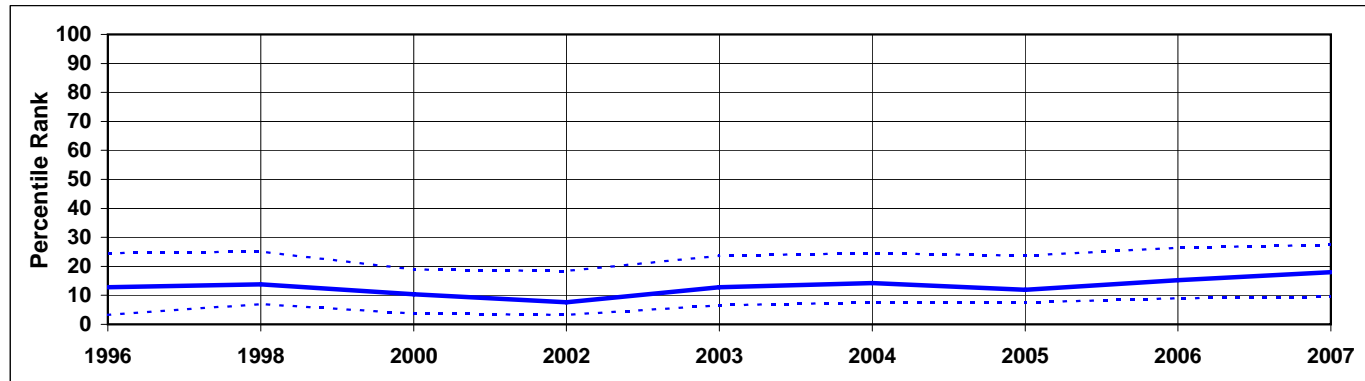


Individual Indicators used to construct Regulatory Quality

Code	Source	Website	1996	1998	2000	2002	2003	2004	2005	2006	2007
ADB	African Development Bank Country Policy and Institutional Assessments	http://www.afdb.org/
ASD	Asian Development Bank Country Policy and Institutional Assessments	http://www.adb.org/
BPS	Business Enterprise Environment Survey	http://www.worldbank.org/eca/governance
BTI	Bertelsmann Transformation Index	http://www.bertelsmann-transformation-index.de/	0.00	0.00	0.45	0.45	0.45	0.40
DRI	Global Insight Global Risk Service	http://www.globalinsight.com	0.76	0.77
EBR	European Bank for Reconstruction & Development Transition Report	http://www.ebrd.org
EIU	Economist Intelligence Unit	http://www.eiu.com	0.35	0.35	0.35	0.35	0.35	0.35	0.35	0.55	0.55
GCS	World Economic Forum Global Competitiveness Survey	http://www.weforum.org
HER	Heritage Foundation Index of Economic Freedom	http://www.heritage.org	0.50	0.30	0.30	0.40	0.40	0.40	0.40	0.40	0.40
IFD	IFAD Rural Sector Performance Assessments	http://www.ifad.org	0.48	0.57	0.60	0.58
IPD	Institutional Profiles Database	http://www.cepii.fr/	0.23	0.23
MIG	Merchant International Group Gray Area Dynamics	http://www.merchantinternational.com	0.30	0.25	0.25	0.25	0.25	0.25
PIA	World Bank Country Policy and Institutional Assessments	http://www.worldbank.org	NA	NA	NA	NA	NA	NA	0.55	0.55	0.60
PRS	Political Risk Services International Country Risk Guide	http://www.prsgroup.com	0.36	0.67	0.64	0.64	0.64	0.64	0.64	0.64	0.64
WCY	Institute for management & development World Competitiveness Yearbook	http://www.imd.ch
WMO	Global Insight Business Conditions and Risk Indicators	http://www.globalinsight.com	..	0.44	0.44	0.44	0.38	0.34	0.38	0.38	0.38

YEMEN, 1996-2007

Aggregate Indicator: Rule of Law

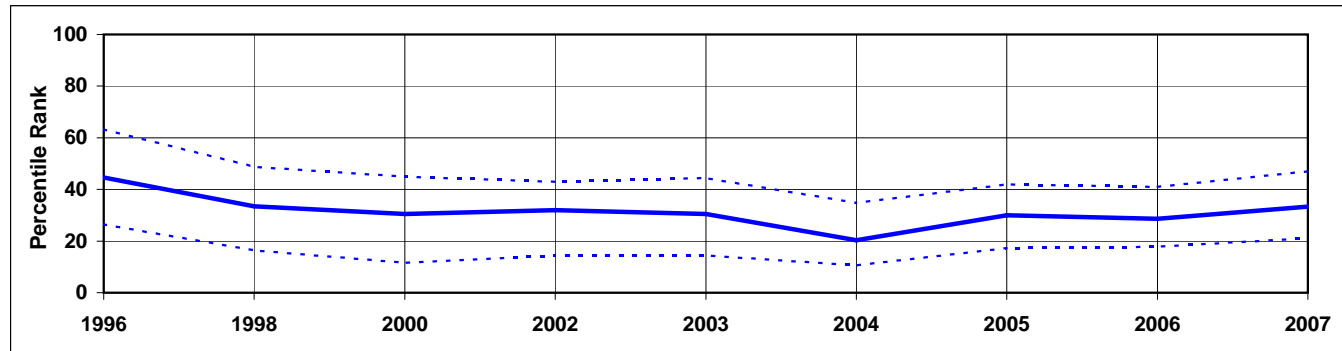


Individual Indicators used to construct Rule of Law

Code	Source	Website	1996	1998	2000	2002	2003	2004	2005	2006	2007
ADB	African Development Bank Country Policy and Institutional Assessments	http://www.afdb.org/
AFR	Afrobarometer	http://www.afrobarometer.org
ASD	Asian Development Bank Country Policy and Institutional Assessments	http://www.adb.org/
BPS	Business Enterprise Environment Survey	http://www.worldbank.org/eca/governance
BRI	Business Environment Risk Intelligence Business Risk Service	http://www.beri.com
BTI	Bertelsmann Transformation Index	http://www.bertelsmann-transformation-index.de/	0.00	0.00	0.40	0.40	0.40	0.40
CCR	Freedom House Countries at the Crossroads	http://www.freedomhouse.org	0.49	0.49	0.49	0.49	0.49
DRI	Global Insight Global Risk Service	http://www.globalinsight.com	0.46	0.49
EIU	Economist Intelligence Unit	http://www.eiu.com	0.09	0.09	0.09	0.09	0.09	0.09	0.09	0.34	0.38
FRH	Freedom House	http://www.freedomhouse.org
GCS	World Economic Forum Global Competitiveness Survey	http://www.weforum.org
GII	Global Integrity Index	http://www.globalintegrity.org/	0.34	0.34
GWP	Gallup World Poll	http://www.gallupworldpoll.com	0.55	0.55
HER	Heritage Foundation Index of Economic Freedom	http://www.heritage.org	0.30	0.30	0.30	0.30	0.30	0.30	0.30	0.30	0.30
HUM	Cingranelli-Richards (CIRI) Human Rights Database	http://www.humanrightsdata.com	0.50	0.50	0.50	0.50	0.00	0.00	0.00	0.00	0.00
IFD	IFAD Rural Sector Performance Assessments	http://www.ifad.org	0.51	0.58	0.59	0.66
IPD	Institutional Profiles Database	http://www.cepii.fr/	0.25	0.25
LBO	Latinobarometro	http://www.latinobarometro.org
MIG	Merchant International Group Gray Area Dynamics	http://www.merchantinternational.com	0.23	0.23	0.23	0.23	0.23	0.24
PIA	World Bank Country Policy and Institutional Assessments	http://www.worldbank.org	NA	NA	NA	NA	NA	NA	0.30	0.30	0.30
PRS	Political Risk Services International Country Risk Guide	http://www.prsgroup.com	0.50	0.50	0.33	0.33	0.33	0.33	0.33	0.33	0.33
QLM	Business Environment Risk Intelligence Financial Ethics Index	http://www.beri.com	0.30	0.32	0.32	0.32	0.32	0.32	0.32	0.30	0.30
TPR	US State Department Trafficking in People report	http://www.state.gov/g/tip/rls/tiprpt	0.67	0.67	0.67	0.67
VAB	Vanderbilt University Americas Barometer Survey	http://www.lapopsurveys.org
WCY	Institute for management & development World Competitiveness Yearbook	http://www.imd.ch
WMO	Global Insight Business Conditions and Risk Indicators	http://www.globalinsight.com	..	0.31	0.31	0.31	0.38	0.43	0.38	0.38	0.38

YEMEN, 1996-2007

Aggregate Indicator: Control of Corruption



Individual Indicators used to construct Control of Corruption

Code	Source	Website	1996	1998	2000	2002	2003	2004	2005	2006	2007
ADB	African Development Bank Country Policy and Institutional Assessments	http://www.afdb.org/
AFR	Afrobarometer	http://www.afrobarometer.org
ASD	Asian Development Bank Country Policy and Institutional Assessments	http://www.adb.org/
BPS	Business Enterprise Environment Survey	http://www.worldbank.org/eca/governance
BRI	Business Environment Risk Intelligence Business Risk Service	http://www.beri.com
BTI	Bertelsmann Transformation Index	http://www.bertelsmann-transformation-index.de/	0.25	0.25	0.25	0.30
CCR	Freedom House Countries at the Crossroads	http://www.freedomhouse.org	0.26	0.26	0.26	0.26	0.26
DRI	Global Insight Global Risk Service	http://www.globalinsight.com	0.30	0.35
EIU	Economist Intelligence Unit	http://www.eiu.com	0.25	0.00	0.00	0.00	0.00	0.00	0.00	0.25	0.25
FRH	Freedom House	http://www.freedomhouse.org
GCB	Transparency International Global Corruption Barometer Survey	http://www.transparency.org
GCS	World Economic Forum Global Competitiveness Survey	http://www.weforum.org
GII	Global Integrity Index	http://www.globalintegrity.org/	0.38	0.38
GWP	Gallup World Poll	http://www.gallupworldpoll.com	0.27	0.27
IFD	IFAD Rural Sector Performance Assessments	http://www.ifad.org	0.44	0.51	0.51	0.42
IPD	Institutional Profiles Database	http://www.cepii.fr/	0.16	0.16
LBO	Latinobarometro	http://www.latinobarometro.org
MIG	Merchant International Group Gray Area Dynamics	http://www.merchantinternational.com	0.15	0.10	0.15	0.20	0.20	0.24
PIA	World Bank Country Policy and Institutional Assessments	http://www.worldbank.org	NA	NA	NA	NA	NA	NA	0.40	0.40	0.40
PRC	Political Economic Risk Consultancy Corruption in Asia	http://www.asiarisk.com/
PRS	Political Risk Services International Country Risk Guide	http://www.prsgroup.com	0.50	0.50	0.33	0.33	0.33	0.33	0.33	0.33	0.33
QLM	Business Environment Risk Intelligence Financial Ethics Index	http://www.beri.com	0.30	0.30	0.32	0.32	0.30	0.28	0.28	0.26	0.26
VAB	Vanderbilt University Americas Barometer Survey	http://www.lapopsurveys.org
WCY	Institute for management & development World Competitiveness Yearbook	http://www.imd.ch
WMO	Global Insight Business Conditions and Risk Indicators	http://www.globalinsight.com	..	0.38	0.38	0.38	0.38	0.35	0.38	0.38	0.38